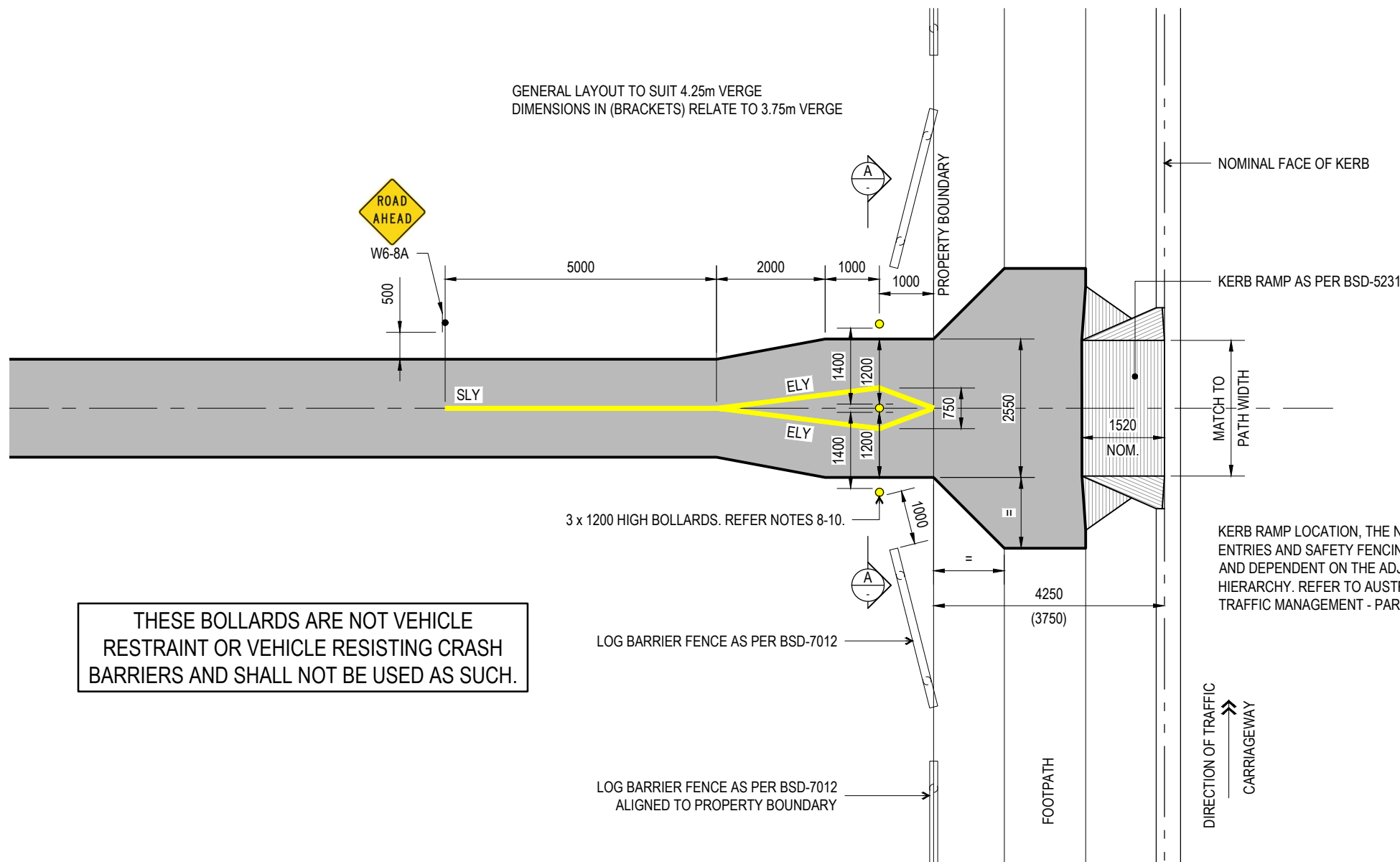


GENERAL LAYOUT TO SUIT 4.25m VERGE
DIMENSIONS IN (BRACKETS) RELATE TO 3.75m VERGE



THESE BOLLARDS ARE NOT VEHICLE RESTRAINT OR VEHICLE RESISTING CRASH BARRIERS AND SHALL NOT BE USED AS SUCH.

LEGEND - PAVEMENT MARKING

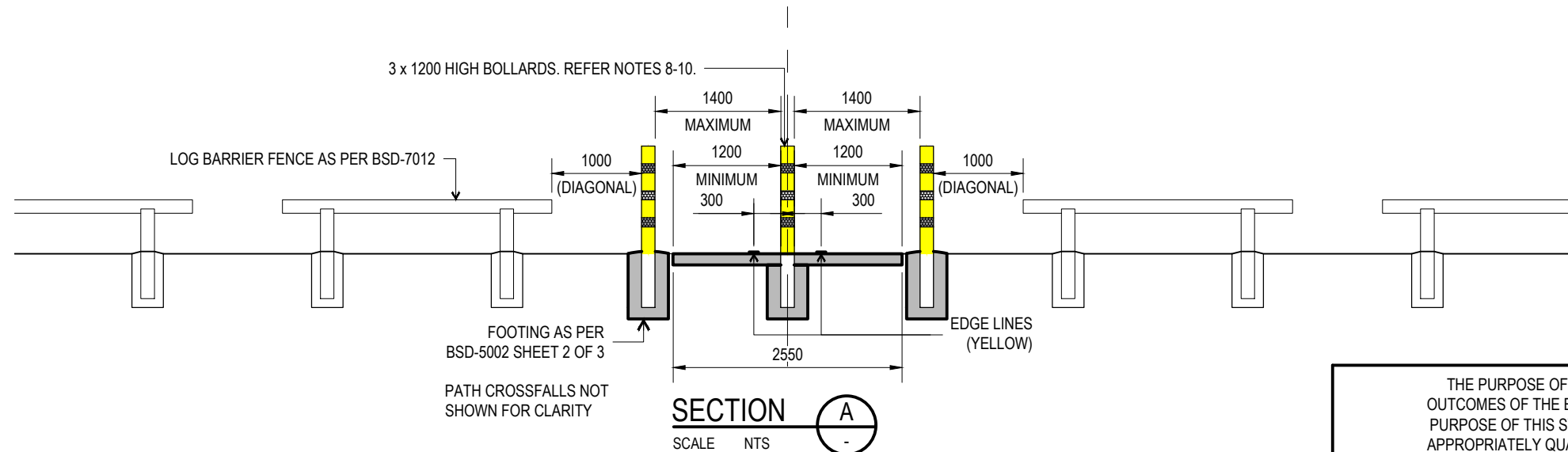
- YELLOW (Y13 VIVID YELLOW)(REFER NOTE 2)
- COLOURED CONCRETE RAMP (REFER NOTE 4)
- PLAIN, UN-PAINTED CONCRETE SURFACE
- SLY SEPARATION LINE - UNBROKEN (100mm, YELLOW)
- ELY EDGE LINE (100mm, YELLOW)

GENERAL NOTES

1. ALL DIMENSIONS ARE TO NOMINAL FACE OF KERB.
2. NON-SLIP SURFACE TREATMENT TO BICYCLE AREAS TO BE IN ACCORDANCE WITH COUNCIL REFERENCE SPECIFICATION S155, TABLE 4.2, TYPE 2. PAVEMENT TREATMENT TO BE APPLIED BEFORE FINAL PAVEMENT MARKING.
3. NON-SLIP SURFACE TREATMENT AREAS ARE TO BE CERTIFIED BY A NATA CERTIFIED TESTING FACILITY TO ENSURE COMPLIANCE WITH NOTE 2.
4. RAMP CONCRETE TO BE FULL DEPTH COLOURED CONCRETE. COLOUR TO BE CONCRETE COLOUR SYSTEMS "VOODOO" OR APPROVED EQUIVALENT.
5. SIGNS TO BE INSTALLED AS SHOWN AND AS PER THE MANUAL OF UNIFORM TRAFFIC CONTROL DEVICES.
6. SIGN FOOTINGS ARE TO BE AS PER BSD-5003.
7. ALL DIMENSIONS TO BOLLARDS ARE TO THE FACE OF THE BOLLARD.
8. BOLLARDS ARE TO BE MINIMUM 1200mm HIGH x 150mm DIAMETER OR APPROVED EQUIVALENT.
9. BOLLARDS USED TO PROTECT COUNCIL INFRASTRUCTURE (eg BRIDGES, RETAINING WALLS) ARE TO BE RIGID. ACCESS RESTRICTION BOLLARDS MAY BE ENERGY ABSORBING AS APPROVED BY COUNCIL.
10. RIGID BOLLARDS ARE TO BE MANUFACTURED AND INSTALLED AS PER BSD-5002, SHEET 2 OF 3. CENTRAL BOLLARDS ARE TO BE REMOVABLE WHERE REQUIRED FOR MAINTENANCE ACCESS. REMOVABLE BOLLARDS ARE TO BE ALUMINIUM FOR EASE OF LIFTING. NON-REMOVABLE BOLLARDS ARE TO BE STEEL.
11. CLEARANCE TO UNDERSIDE OF SIGNS TO BE 2.0 METRES WHERE OFFSET FROM PATH AS SHOWN, EXCEPT FOR HAZARD MARKERS UNLESS NOTED OTHERWISE.
11. ALL CONCRETE IS TO BE AS PER BSD-5208.

SPECIFIC NOTES

1. BASIC ENTRANCE TREATMENT SUITABLE ONLY FOR PEDESTRIAN PATHS AND LOCAL CYCLE ROUTES, WITH LOW CYCLIST VOLUMES.
2. FOR FURTHER GUIDANCE REFER TO COUNCIL'S ASSET OWNER FOR ACTIVE TRANSPORT.
3. DIMENSIONS IN MILLIMETRES UNLESS NOTED OTHERWISE.



THE PURPOSE OF THIS STANDARD DRAWING IS TO PROVIDE TYPICAL DETAILS THAT SUPPORT THE DESIRED OUTCOMES OF THE BRISBANE CITY PLAN 2014 AND ASSOCIATED PLANNING SCHEME POLICIES. THE FITNESS FOR PURPOSE OF THIS STANDARD DRAWING FOR A SPECIFIC PROJECT SHOULD BE ASSESSED AND ACCEPTED BY AN APPROPRIATELY QUALIFIED DESIGNER AND/OR REGISTERED PROFESSIONAL ENGINEER OF QUEENSLAND (RPEQ).







BRISBANE CITY COUNCIL STANDARD DRAWING

SHARED PATH
BASIC ENTRANCE
SHEET 1 OF 3

PUBLISH DATE	SEP 2024
SCALE	NOT TO SCALE
DRAWING NUMBER	BSD-5002
ORIGINAL SIZE	A3
REVISION	E

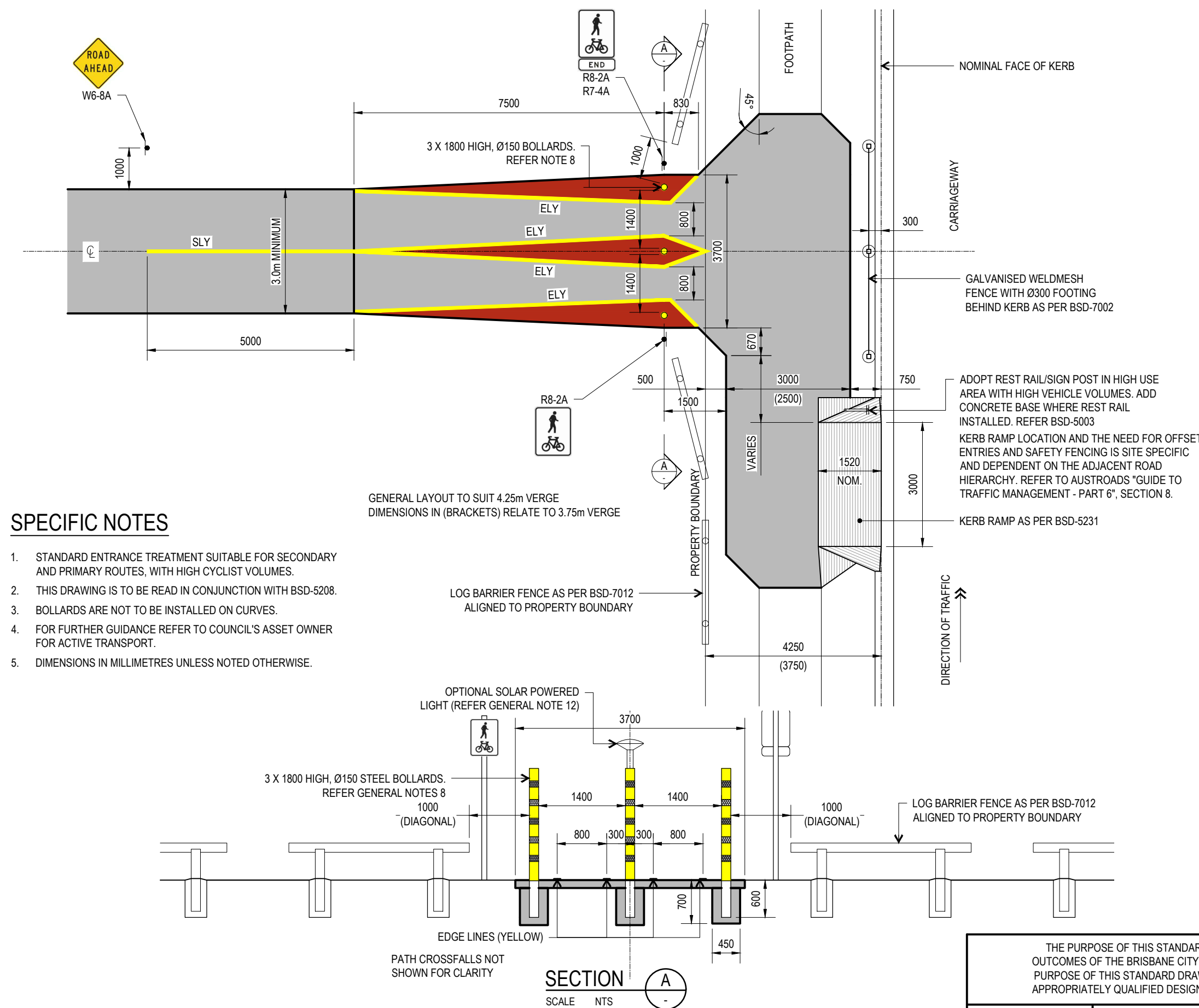
LEGEND - PAVEMENT MARKING

-  YELLOW (Y13 VIVID YELLOW)(REFER GENERAL NOTE 2)
-  RED (R13 SIGNAL RED)(REFER GENERAL NOTE 2)
-  COLOURED CONCRETE RAMP (REFER GENERAL NOTE 4)
-  PLAIN, UN-PAINTED CONCRETE SURFACE (REFER GENERAL NOTE 13)
- SLY SEPARATION LINE - UNBROKEN (100mm, YELLOW)
- ELY EDGE LINE (100mm, YELLOW)

GENERAL NOTES

1. ALL DIMENSIONS ARE TO NOMINAL FACE OF KERB.
2. NON-SLIP SURFACE TREATMENT TO BICYCLE AREAS TO BE IN ACCORDANCE WITH COUNCIL REFERENCE SPECIFICATION S155, TABLE 4.2, TYPE 2. PAVEMENT TREATMENT TO BE APPLIED BEFORE FINAL PAVEMENT MARKING.
3. NON-SLIP SURFACE TREATMENT AREAS ARE TO BE CERTIFIED BY A NATA CERTIFIED TESTING FACILITY TO ENSURE COMPLIANCE WITH NOTE 2.
4. RAMP CONCRETE TO BE FULL DEPTH COLOURED CONCRETE. COLOUR TO BE CONCRETE COLOUR SYSTEMS "VOODOO" OR APPROVED EQUIVALENT.
5. SIGNS TO BE INSTALLED AS SHOWN AND AS PER THE MANUAL OF UNIFORM TRAFFIC CONTROL DEVICES.
6. SIGN FOOTINGS ARE TO BE AS PER BSD-5003.
7. ALL DIMENSIONS TO BOLLARDS ARE TO THE FACE OF THE BOLLARD.
8. BOLLARDS ARE TO BE INSTALLED AS SHOWN ON SECTION 'A'. CENTRAL BOLLARDS ARE TO BE REMOVABLE WHERE REQUIRED FOR MAINTENANCE ACCESS. REMOVABLE BOLLARDS ARE TO BE ALUMINIUM FOR EASE OF LIFTING. NON-REMOVABLE BOLLARDS ARE TO BE STEEL.
9. STEEL BOLLARDS ARE TO BE DN 150mm MEDIUM DUTY WITH A 10mm THICK PLATE CAP, HOT DIPPED GALVANISED, POWDER COATED IN BCC CORPORATE COLOUR PALETTE "YELLOW 5" (AS 2700-1996 "Y11 CANARY YELLOW" EQUIV.).
10. REFLECTIVE TAPE TO BOLLARDS IS TO BE ALTERNATE BANDS OF 100mm WIDE RED AND WHITE CLASS 1A RETROREFLECTIVE TAPE. THREE BANDS OF RED AND TWO BANDS OF WHITE WITH 200mm GAPS BETWEEN BANDS STARTING 300mm ABOVE GROUND.
11. CLEARANCE TO UNDERSIDE OF SIGNS TO BE 2.0 METRES EXCEPT FOR HAZARD MARKERS UNLESS NOTED OTHERWISE.
12. SOLAR POWERED LIGHT WITH OR WITHOUT DOWN REFLECTOR TO SPILL LIGHT OVER BOLLARD. AVAILABLE FROM ORCA SOLAR LIGHTING, CONTACT NUMBER 1300 760 778. LIGHTS TO ONLY BE PROVIDED TO 1800mm HIGH BOLLARDS.
13. ALL CONCRETE IS TO BE AS PER BSD-5208.


THESE BOLLARDS ARE NOT VEHICLE RESTRAINT OR VEHICLE RESISTING CRASH BARRIERS AND SHALL NOT BE USED AS SUCH.



SPECIFIC NOTES

1. STANDARD ENTRANCE TREATMENT SUITABLE FOR SECONDARY AND PRIMARY ROUTES, WITH HIGH CYCLIST VOLUMES.
2. THIS DRAWING IS TO BE READ IN CONJUNCTION WITH BSD-5208.
3. BOLLARDS ARE NOT TO BE INSTALLED ON CURVES.
4. FOR FURTHER GUIDANCE REFER TO COUNCIL'S ASSET OWNER FOR ACTIVE TRANSPORT.
5. DIMENSIONS IN MILLIMETRES UNLESS NOTED OTHERWISE.

THE PURPOSE OF THIS STANDARD DRAWING IS TO PROVIDE TYPICAL DETAILS THAT SUPPORT THE DESIRED OUTCOMES OF THE BRISBANE CITY PLAN 2014 AND ASSOCIATED PLANNING SCHEME POLICIES. THE FITNESS FOR PURPOSE OF THIS STANDARD DRAWING FOR A SPECIFIC PROJECT SHOULD BE ASSESSED AND ACCEPTED BY AN APPROPRIATELY QUALIFIED DESIGNER AND/OR REGISTERED PROFESSIONAL ENGINEER OF QUEENSLAND (RPEQ).

	BRISBANE CITY COUNCIL STANDARD DRAWING		PUBLISH DATE	SEP 2024
	SHARED PATH STANDARD ENTRANCE SHEET 2 OF 3		SCALE	NOT TO SCALE
			DRAWING NUMBER	BSD-5002
	ORIGINAL SIZE	A3	REVISION	E

